

RARITAN BAY AND SANDY HOOK BAY, PORT MONMOUTH, NJ HURRICANE AND STORM DAMAGE REDUCTION PROJECT

Middletown, NJ

USACE - New York District
January 2023



US Army Corps
of Engineers®
New York District



US Army Corps
of Engineers®
New York District

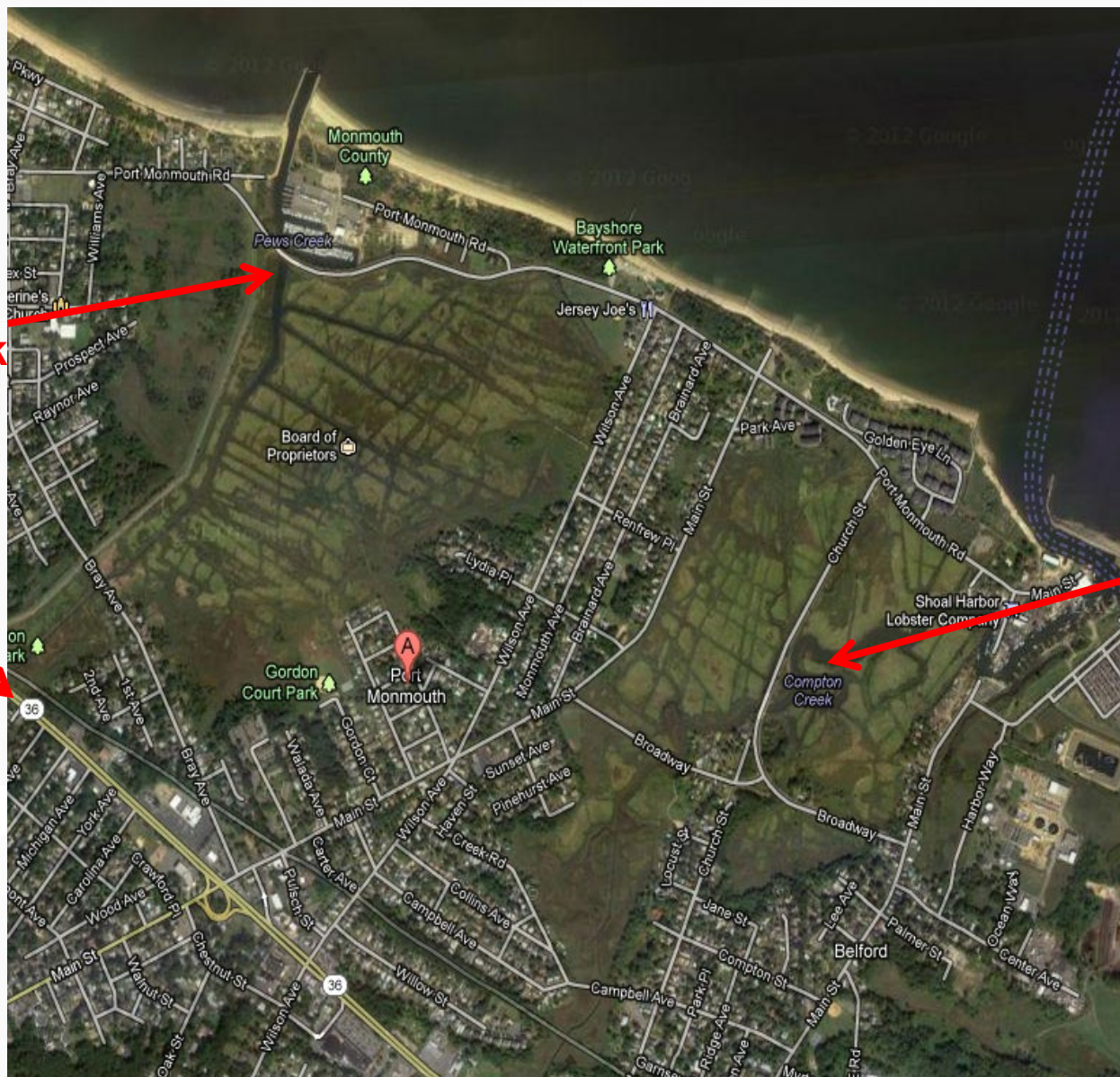
RARITAN BAY AND SANDY HOOK BAY, PORT MONMOUTH, NJ HURRICANE AND STORM DAMAGE REDUCTION PROJECT

OVERVIEW

- Introduction & Authority
- NJDEP Partner
- Project Overview
- Phases and Features
- Walk thru Project Features
- Current and planned construction work
- Schedule
- Questions



US Army Corps
of Engineers®
New York District



**Pews
Creek**

Route 36

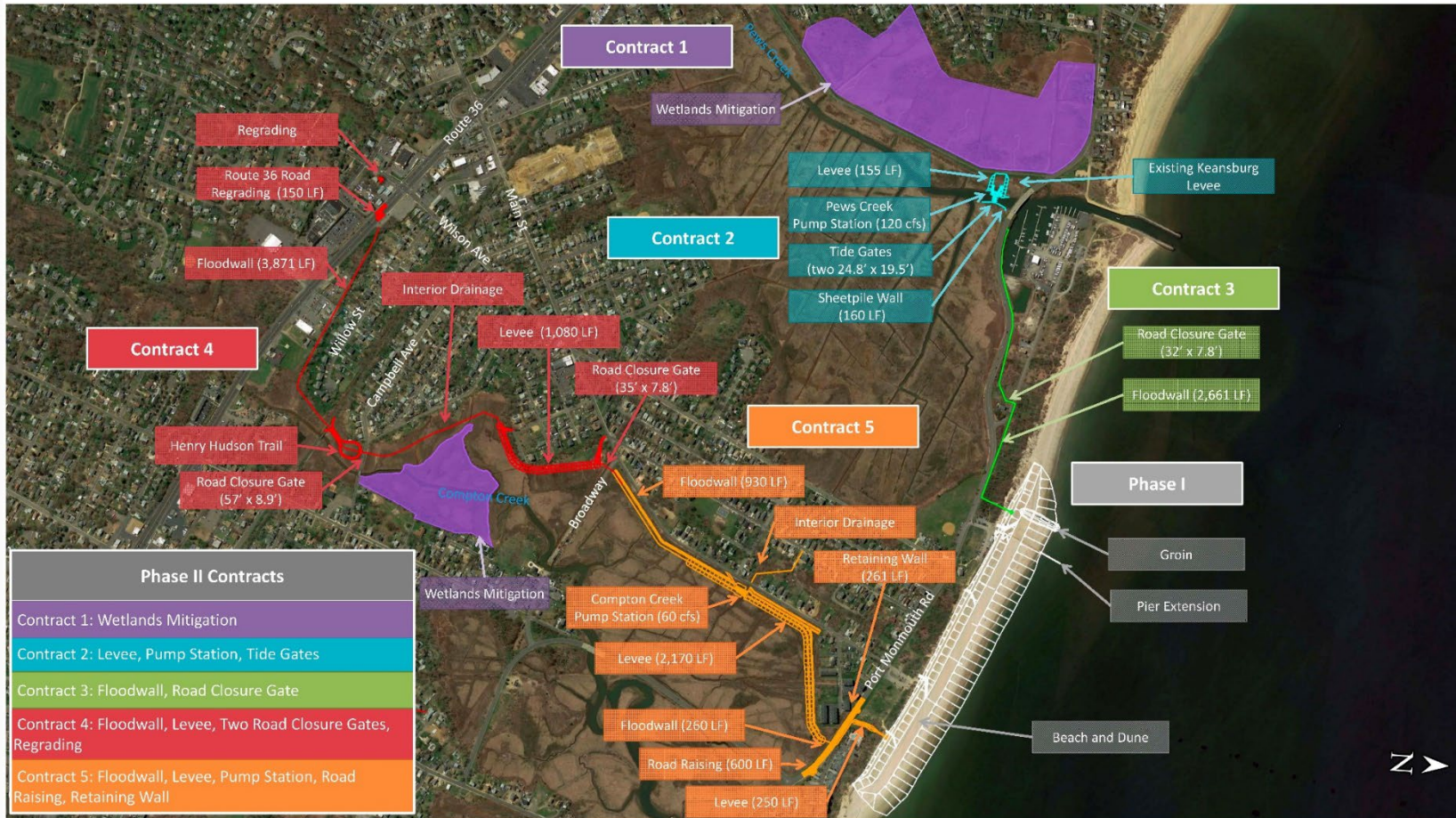
**Compton
Creek**



PORT MONMOUTH, NJ OVERVIEW



US Army Corps
of Engineers®
New York District





US Army Corps
of Engineers®
New York District

AUTHORITY

- The project is authorized for construction under Section 101 of the Water Resources Development Act of 2000. The authorization provides for hurricane and storm damage reduction, in the Raritan Bay and Sandy Hook Bay, Port Monmouth, New Jersey.
- Public Law 113-2, the Disaster Relief Appropriation Act of 2013, Chapter 4



New Jersey's Shore Protection Program



US Army Corps
of Engineers®
New York District

State of New Jersey
Phil Murphy, Governor
Sheila Oliver, Lt. Governor

Dept. of Environmental Protection
Shawn M. LaTourette, Commissioner

Watershed & Land Management Program
Katrina Angarone, Assistant Commissioner





New Jersey's Shore Protection Program



US Army Corps
of Engineers®
New York District

Watershed & Land Management Divisions

Division of Land Resource Protection

Director: Jennifer Moriarty

Division of Watershed Protection & Restoration

Director: Anika Andrews

Division of Resilience Engineering & Construction

Director: Dennis Reinknecht



Office of Dam Safety & Flood Engineering (Trenton)

Office of Coastal Engineering (Toms River)

Erick Doyle, Bureau Chief

Kelley Staffieri, Bureau Chief





NEW JERSEY SHORE PROTECTION FUND



US Army Corps
of Engineers®
New York District

“To protect existing development and infrastructure from storm surges, sea-level rise and shoreline migration through dune creation and maintenance, beach nourishment projects, and construction and repair of shore protection structures.”

\$25 million dedicated annually

Realty Transfer Tax (N.J.S.A. C.13:19-16.1)

This project is 100% Federally funded for **initial construction
Future renourishments will be cost shared with the Corps, State, Middletown
Twp. and Monmouth County





STATE OF NEW JERSEY'S ROLE



US Army Corps
of Engineers®
New York District

Non-Federal Sponsor (NFS) with the Corps

- Executed a Partnership Agreement PPA 31 January 2014
- Provide Support Staff for all stages of Project Development, Design and Implementation
- Act as Liaison between the Corps and the Local Sponsors
 - Middletown Twp. and Monmouth County, Monmouth County Park
 - Assist with
 - Real Estate acquisition
 - Technical & Professional Assistance
 - Public Outreach



REAL ESTATE

- Real Estate Acquisition:
- Total #Required to Construct C4b and C5 (incl ROWs):
 - ▶ 48
- To Date:
 - ▶ County (incl. MCPS) Total# 8 – ALL OBTAINED
 - ▶ Middletown Twp. Total# 20 - 10 OBTAINED/10 PENDING
 - ▶ Private Total# 20
 - 5 OBTAINED-being recorded
 - 2 OBTAINED-pending signatures
 - 13 OUTSTANDING – in different stages of acquisition, but soon all should be complete





PHASES AND FEATURES



US Army Corps
of Engineers®
New York District

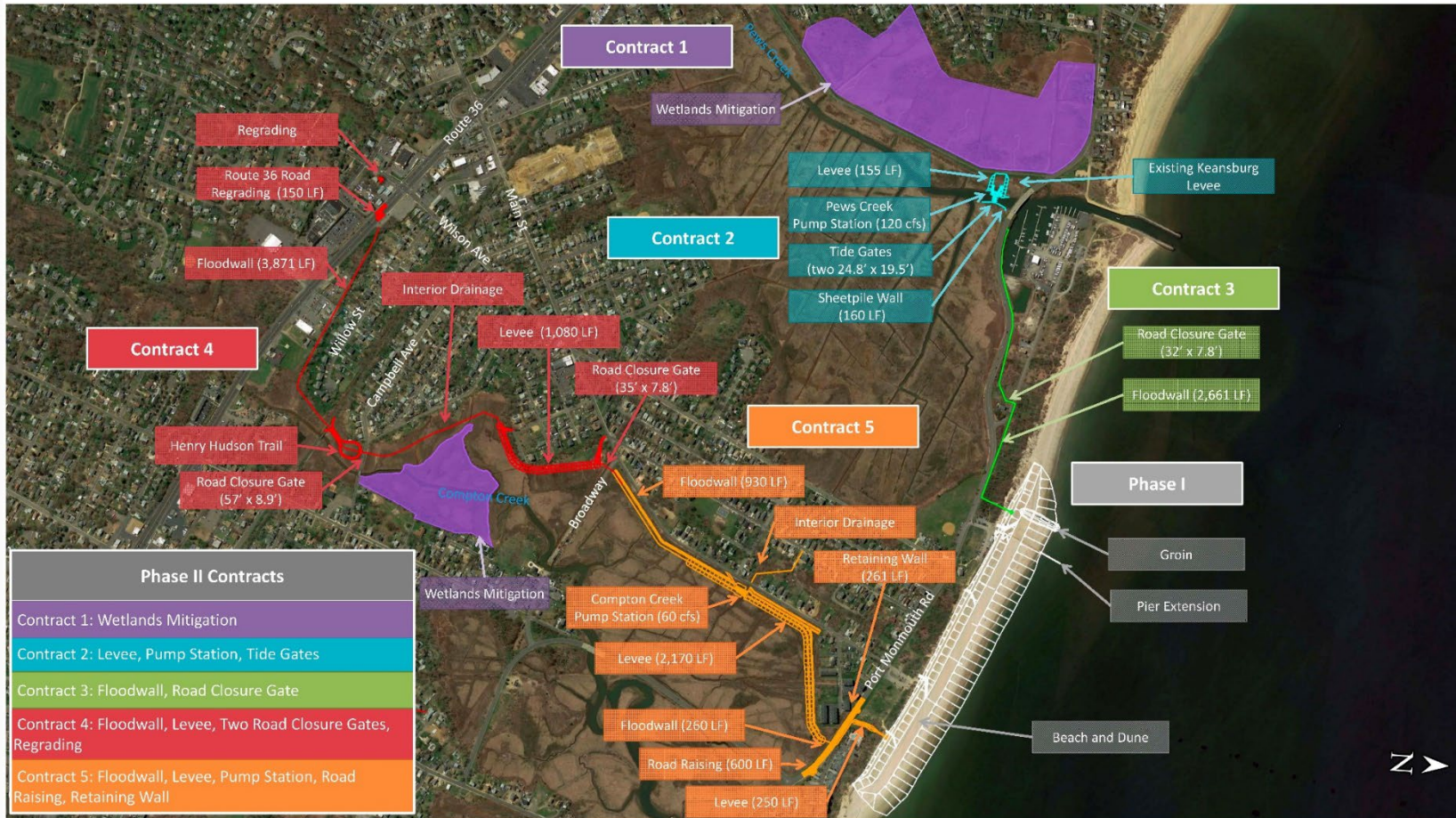
- **Phase I (Completed)**
 - Dune
 - Groin
 - Pier Extension
- **Phase II (Under construction, real estate acquisition and design)**
 - Tide Gate
 - Pump Stations
 - Levees
 - Floodwalls
 - Road Closure Structures
 - Interior Drainage Structures
 - Mitigation



PORT MONMOUTH, NJ PHASE I



US Army Corps
of Engineers®
New York District

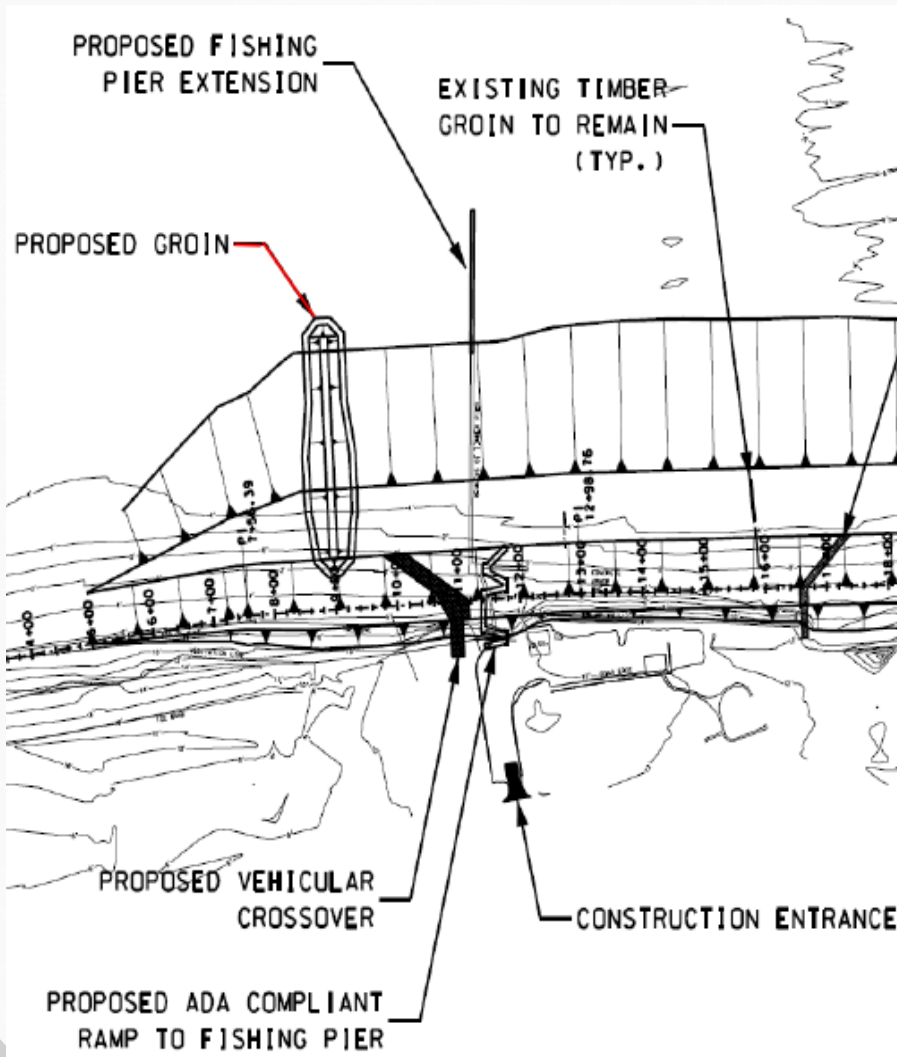




GROIN



US Army Corps
of Engineers®
New York District



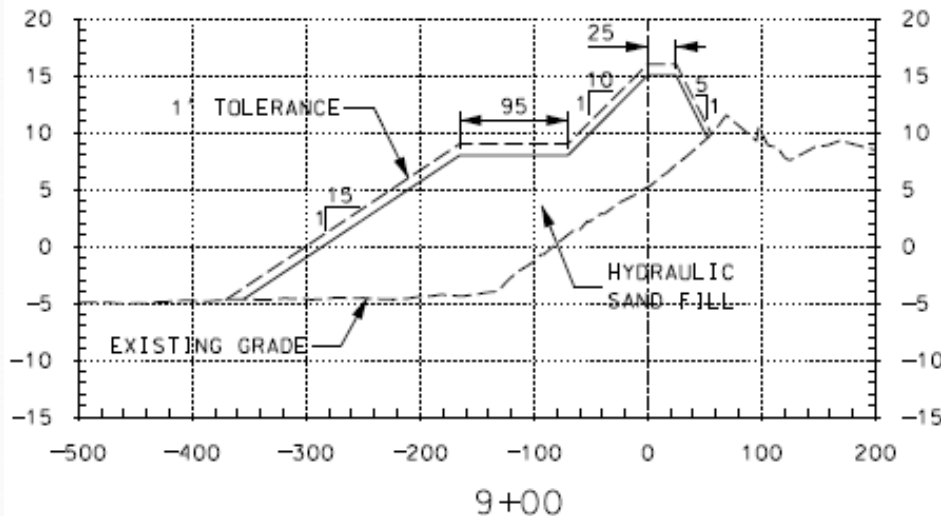
**Port Monmouth
Locations:
Length= 305 LF
Crest Width= 13 ft**



BEACHFILL

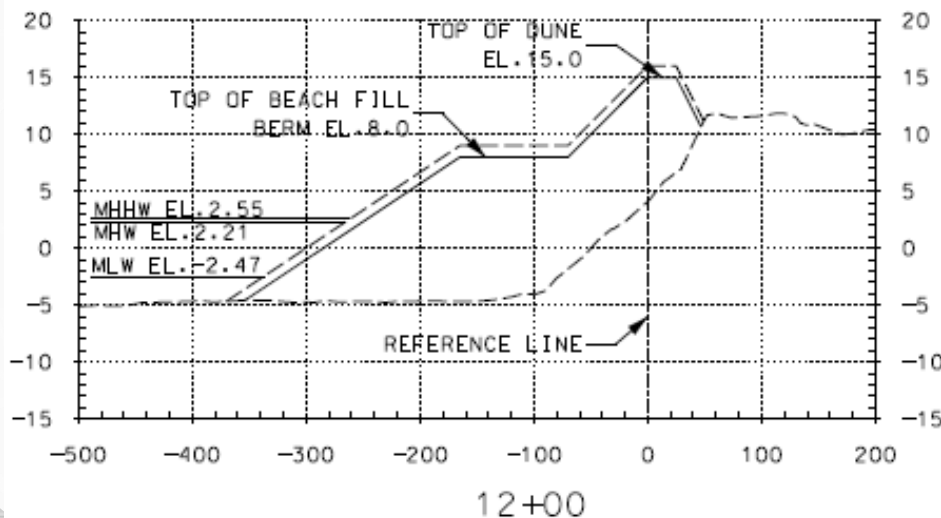


US Army Corps
of Engineers®
New York District



Port Monmouth Beachfill:

- Dune Elevation 15' NAVD (16' NGVD)
- Renourishment
- Look to add beneficial use material Summer 2023

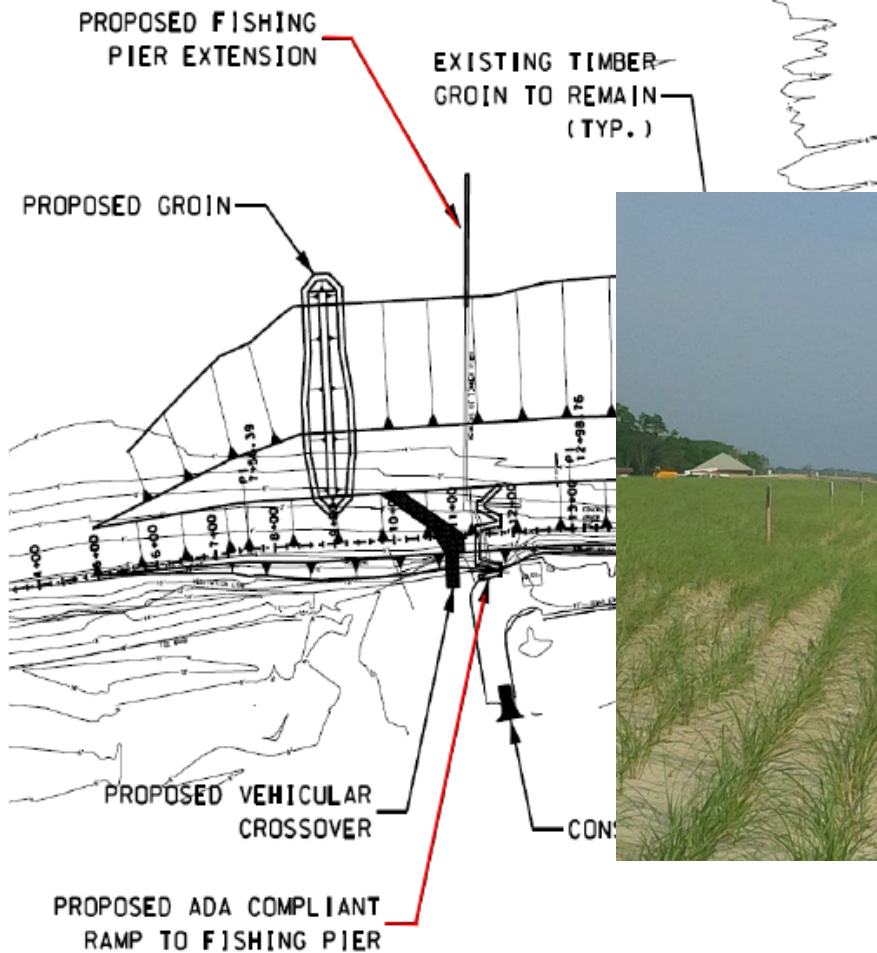




PIER EXTENSION



US Army Corps
of Engineers®
New York District



Port Monmouth Locations:

- Extend Pier by 195LF
- New ADA Ramp





PORT MONMOUTH, NJ PUMP STATION & TIDE GATE LOCATIONS



US Army Corps
of Engineers®
New York District





PUMP STATION & TIDE GATE



US Army Corps
of Engineers®
New York District

Port Monmouth Locations:

Pump Station at Pews Creek - 120 cfs

Pump Station at Compton Creek – 60 cfs





PORT MONMOUTH, NJ LEVEE



US Army Corps
of Engineers®
New York District



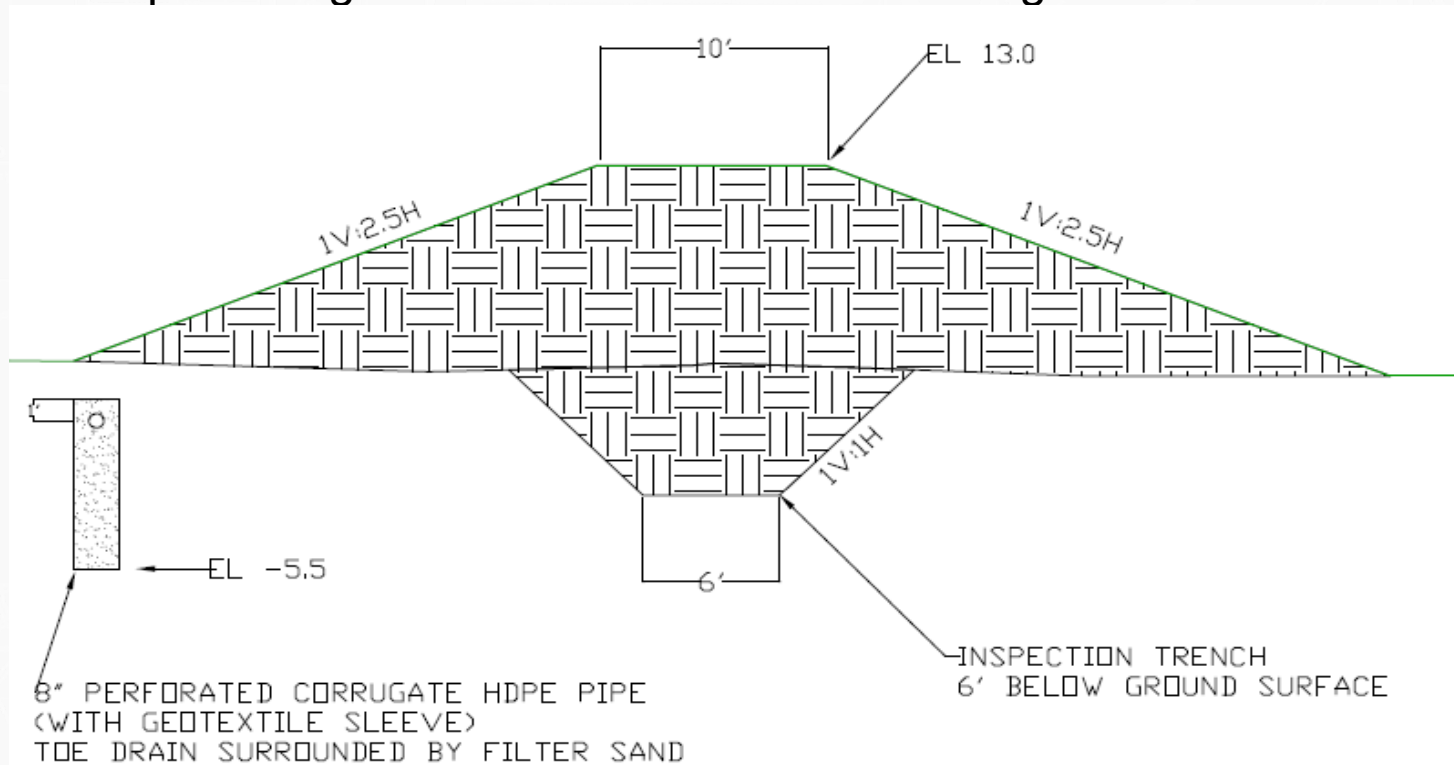


LEVEE



US Army Corps
of Engineers®
New York District

- **Port Monmouth Levee:**
- Various locations
- Elevation 14' NGVD or 13' NAVD
- Required vegetation free 15' from base or edge of swale





LEVEE



US Army Corps
of Engineers®
New York District

- **Port Monmouth Levee:**
- Various locations
- Elevation 14'NGVD or 13' NAVD



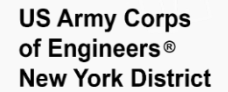


PORT MONMOUTH, NJ FLOODWALL

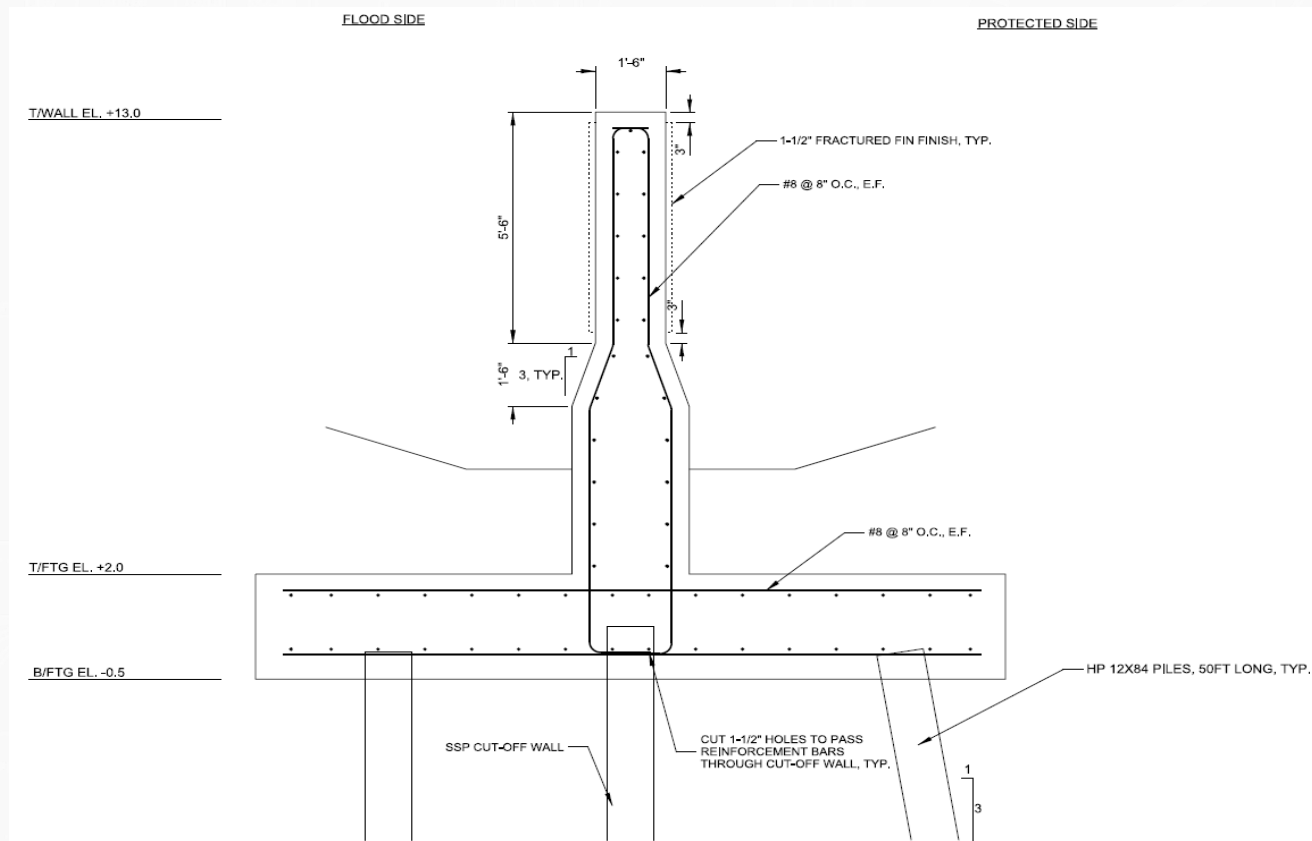


US Army Corps
of Engineers®
New York District





- Various locations
- Elevation +13' NAVD 88
- Required vegetation free 15' from edge of swale





FLOODWALL



US Army Corps
of Engineers®
New York District





FLOODWALL-TYPICAL FINISH



US Army Corps
of Engineers®
New York District





PORT MONMOUTH, NJ ROAD CLOSURE STRUCTURES



US Army Corps
of Engineers®
New York District





ROAD CLOSURE GATE



US Army Corps
of Engineers®
New York District

Port Monmouth Locations:

Old Port Monmouth Road- 40'w x 4'h

Broadway – 40'w x 8'h

Campbell Avenue – 40'w x 8.5'h





PORT MONMOUTH, NJ INTERIOR DRAINAGE FEATURES



US Army Corps
of Engineers®
New York District





INTERIOR DRAINAGE



US Army Corps
of Engineers®
New York District



Port Monmouth Locations:

Pump Station at Pews Creek

Pump Station at Compton Creek

Interior Drainage structures through the levee/floodwall

- Drainage structures with flap valve and sluice gate
- Storm water diversion culvert and swale





PORT MONMOUTH, NJ CONTRACT 1 MITIGATION



US Army Corps
of Engineers®
New York District





PORT MONMOUTH, NJ

CONTRACT 4



US Army Corps
of Engineers®
New York District

Divided into 2 Contracts 4a and 4b

Contract 4a was completed Jan. 2021

- Rte 36 road regrading
- Tie-in
- Utility relocations and infrastructure

Contract 4b features

- Floodwall
- Levee
- 2 Road Closure Gates
- Interior Drainage





RECENTLY AWARDED WORK



US Army Corps
of Engineers®
New York District

Contract 5

- Current construction
- Vibration monitoring
Notices/inspections
- Broken into options
for real estate purposes





CONTRACT 5 OPTIONAL AREAS



US Army Corps
of Engineers®
New York District

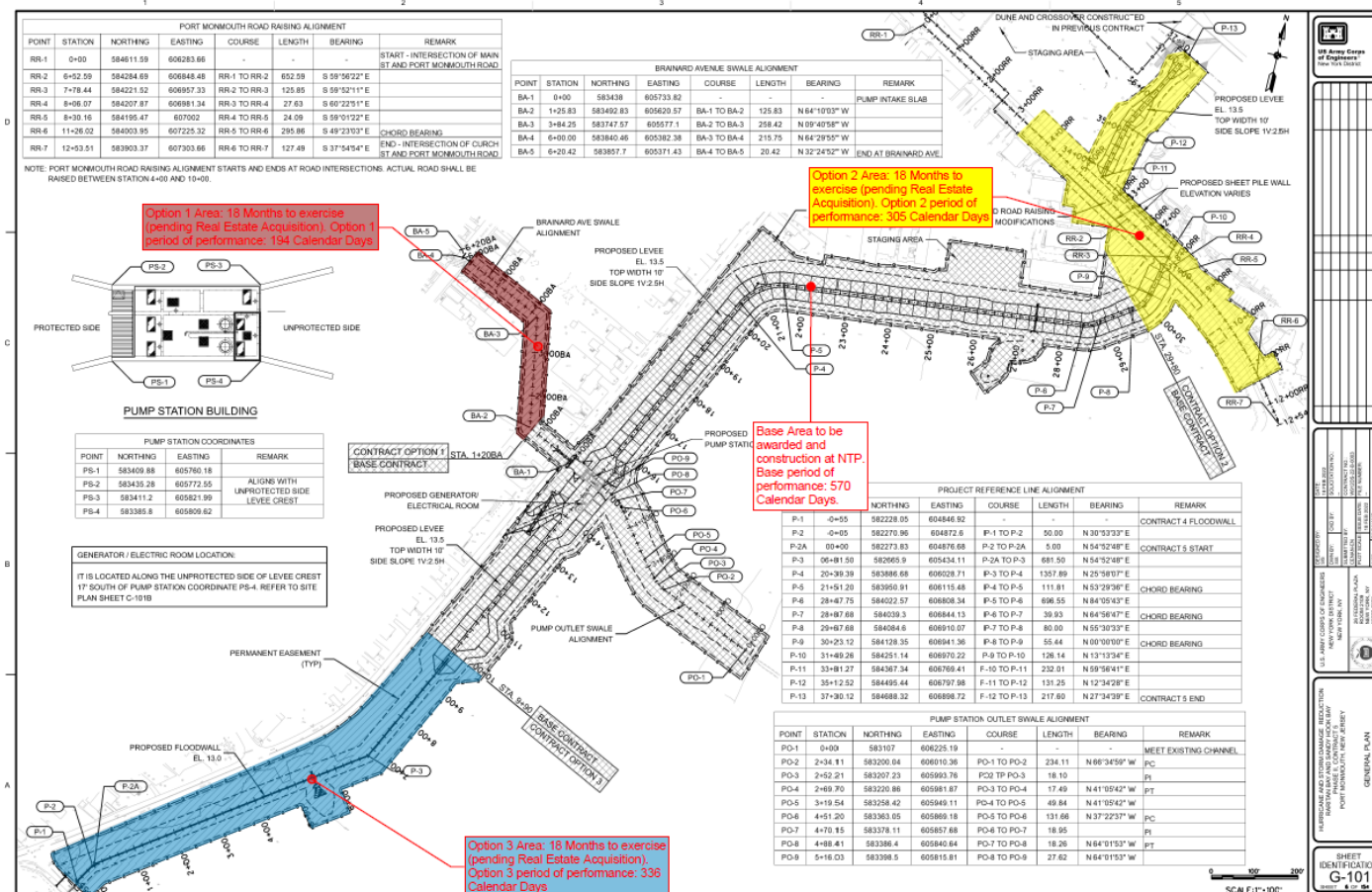
Contract 5 is divided into Base + 3 Option areas

Base - Levee and Pump Station

Option 1 – Swale (194 days)

Option 2 - Road Raising/Levee tie-in (305 days)

Option 3 – Floodwall (336 days)





SCHEDULE



US Army Corps
of Engineers®
New York District

- Current completion date is Spring 2025
- Obtain necessary Real Estate Contracts 1, 4B and 5



CONTACT INFORMATION



US Army Corps
of Engineers®
New York District

Debbie Voelbel
Project Manager
Environmental Specialist 4
NJDEP - Office of Coastal Engineering
Deborah.Voelbel@dep.nj.gov

Lena Stinson
Environmental Engineer 2
NJDEP - Office of Coastal Engineering
Lena.Stinson@dep.nj.gov

Dave Gentile
Project Manager
USACE - New York District
David.T.Gentile@usace.army.mil

Tom Slowinski, PLS, CFM
NJDEP - Dam Safety/Flood Engineering
Tom.Slowinski@dep.nj.gov





**US Army Corps
of Engineers®
New York District**

QUESTIONS?



PORT MONMOUTH, NJ



US Army Corps
of Engineers®
New York District

