

TOWNSHIP OF MIDDLETOWN MONMOUTH COUNTY, NEW JERSEY



Incorporated December 24, 1857
"Principia in Middletown"

Note:

Data used within this map was downloaded from the NJDEP web site.

Legend

Wetlands

- AGRICULTURAL WETLANDS (MODIFIED)
- ARTIFICIAL LAKES
- DECIDUOUS SCRUB/SHRUB WETLANDS
- DECIDUOUS WOODED WETLANDS
- DISTURBED WETLANDS (MODIFIED)
- HERBACEOUS WETLANDS
- MANAGED WETLANDS (MODIFIED)
- NATURAL LAKES
- SALINE MARSHES
- STREAMS AND CANALS
- TIDAL WATER
- WETLAND RIGHTS-OF-WAY (MODIFIED)

FLOODPRONE

- USGS Documented Flood Area
- Undocumented Flood Area

- Boundary
- CAFRA Boundary

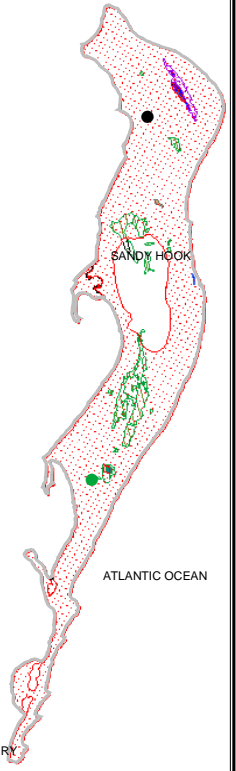
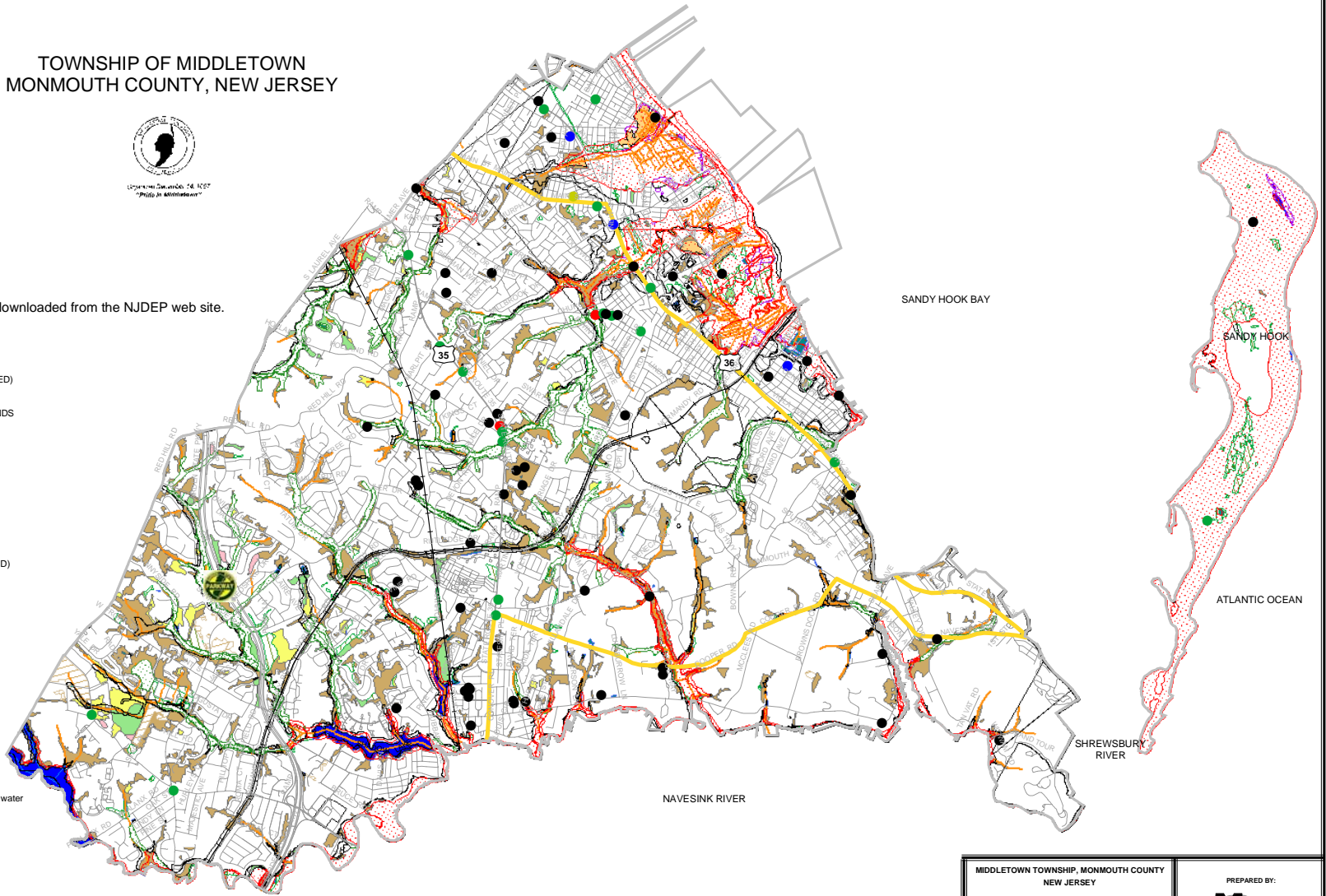
CONTAMINATED SITES

- Soils Contamination
- Storage Tanks
- Ground water Contamination
- Unknown Uncontrolled discharge to soil & water
- No description given

- Railroad
- Roads
- Streams

STREAMS

- Category 2 waters not designated as Outstanding National Resource Waters
- Sandy Hook Nat'l Park



MIDDLETOWN TOWNSHIP, MONMOUTH COUNTY NEW JERSEY ENVIRONMENTAL CONSERVATION MAP OCTOBER 2004 0 1,400 2,800 5,600 8,400 Feet	PREPARED BY: <small>Environmental Services Mapping • Landowners • Landmarks Assessment</small> (908) 684-5500 <small>NJNCAD\Middletown\01-0895\Conservation.mxd</small>
--	--