

PLAN LEGEND

- ◻ WALL TAG
- ◻ DOOR TAG

WALL TYPE LEGEND

- ▬ EXISTING WALL TO REMAIN
 - ▬ EXISTING WALL TO RECEIVE SANITARY FINISH
 - ▬ NONCOMBUSTIBLE, NON LOAD BEARING WALL PARTITION
 - ▬ 2 HOUR FIRE RATED SEPARATION PARTITION
- REFER TO WALL TYPE DETAIL FOR ASSEMBLY INFORMATION

RCP LEGEND

- ▬ 2 HOUR FIRE RATED GYPSUM BOARD ASSEMBLY UL L511, SYSTEM NO. 1. SEE 4-501 FOR MORE INFORMATION
- ▬ 2x4 A.C.T. CEILING GRID INSTALLED IN COOKING & PREP AREAS BELOW FIRE RATED GYPSUM BOARD
- ▬ 2x4 LED TROFFER LIGHT
- 6" SURFACE MOUNTED LED LIGHT
- ▬ EXIT SIGN W/ EMERGENCY LIGHTS
- ▬ EMERGENCY LIGHTS
- RESTROOM EXHAUST VENT
- ▬ DIRECTIONAL EXIT SIGN

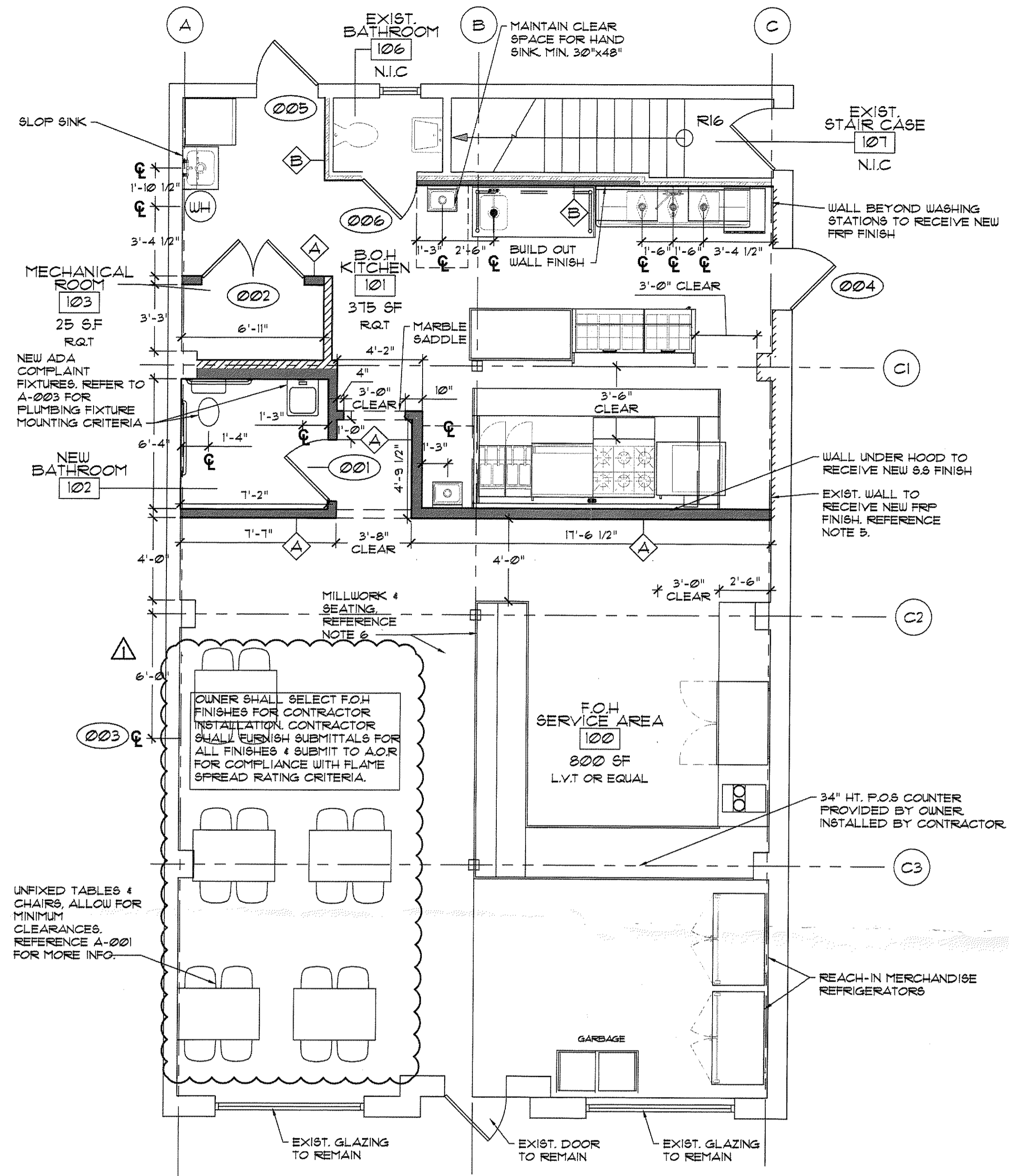
NOTES

- DURING RENOVATION, CONTRACTOR TO MAINTAIN INTEGRITY FOR ALL INTERIOR FIREWALL SEPARATION AND FLOOR CEILING SEPARATION.
- ALL INTERIOR FINISHES (IE WALL COVERINGS, FLOOR COVERINGS, SPECIAL FINISHES, ETC.) WHICH ARE NOT SPECIFIED ON THE DRAWINGS AND WHICH MAY BE INCORPORATED IN FUTURE IMPROVEMENTS FOR OCCUPANCY PURPOSES SHALL CONFORM WITH 2018 I.B.C. NJ EDITION SECTION 803.0 FOR INTERIOR FINISH CLASSIFICATION AND FLAME SPREAD RATINGS.
- ALL INTERIOR SIGNAGE SHALL CONFORM WITH ICC/ANSI A117.1-2009
- FOR KITCHEN EQUIPMENT INFORMATION, REFERENCE EP-100
- KITCHEN & PREP AREAS SHALL RECEIVE FRP FINISH ON ALL WALL PARTITIONS, EXCEPT UNDER HOOD. WALL BEYOND HOOD SHALL RECEIVE S.S. FINISH.
- FURNITURE PROVIDED BY OWNER. INSTALLED BY CONTRACTOR.
- REFERENCE A-100 CRITERIA ON A-003. REFERENCE 1/A401 FOR NEW BATHROOM CLEARANCES.
- REFERENCE MEP SHEETS FOR ADDITIONAL INFORMATION.
- FIRE ALARM BY OTHERS.
- CONTRACTOR SHALL SELECT ALL EMERGENCY LIGHTS & EXIT SIGNS. CONTRACTOR SHALL FURNISH SUBMITTALS FOR REVIEW BY A.O.R.

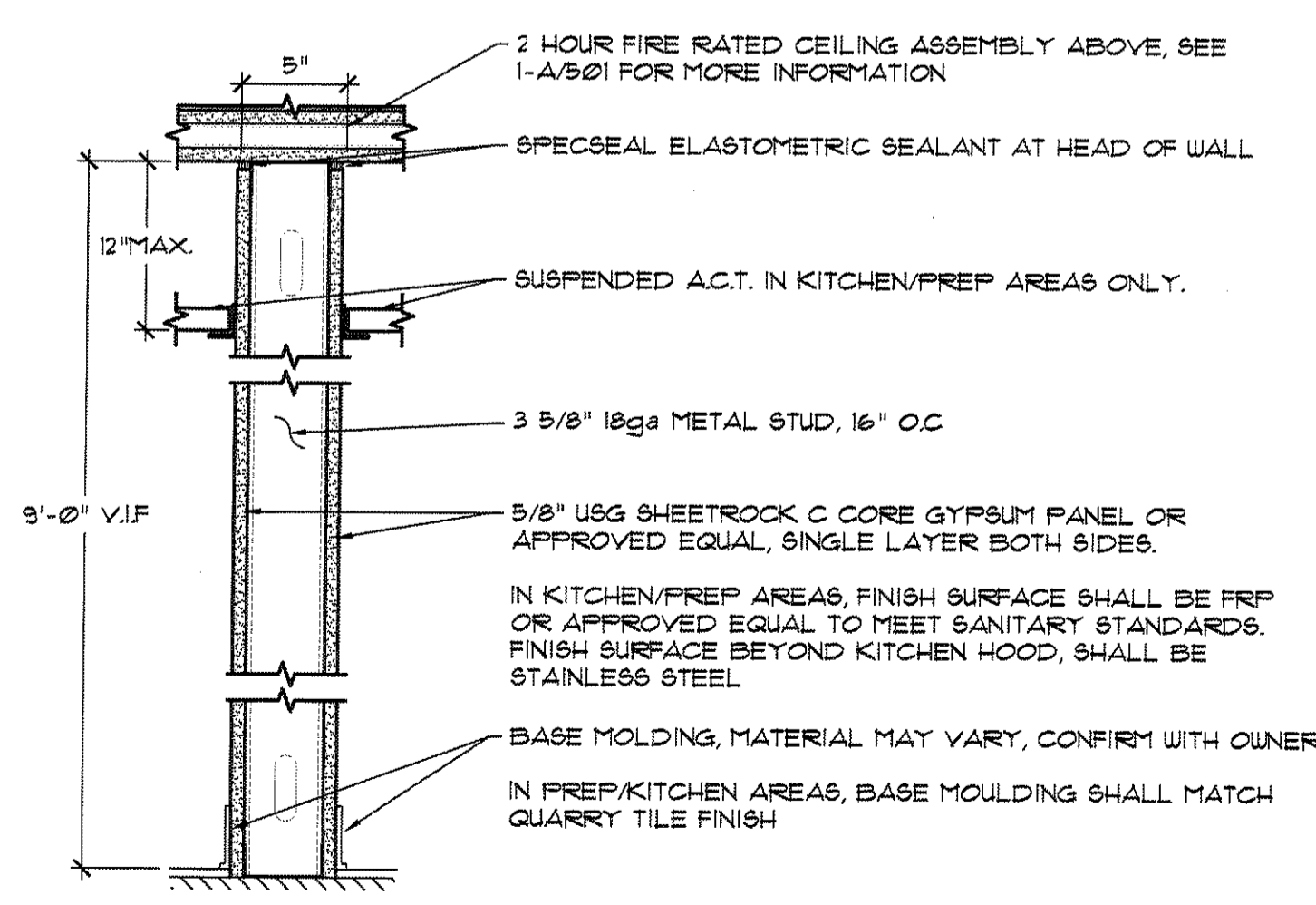
LIGHTING FIXTURE SCHEDULE

NO.	QTY	ITEM	REMARK
L1	5	2x4' LED TROFFER LIGHT	1
L2	23	6" SURFACE MOUNTED LED LIGHT	1
L3	1	SCONCE	1

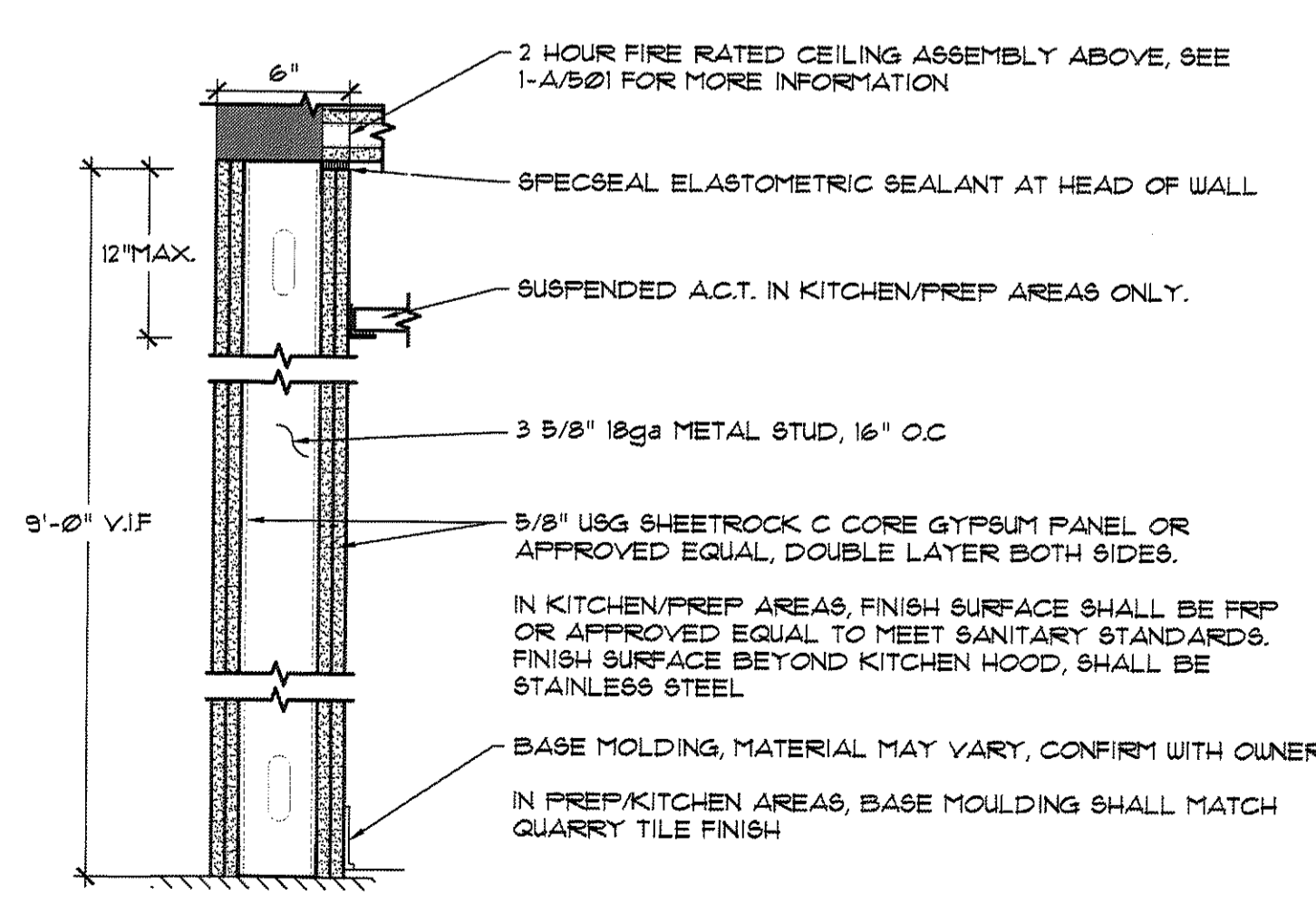
REMARKS
1. LIGHTING FIXTURES SHALL BE SELECTED BY CONTRACTOR, APPROVED BY OWNER. CONTRACTOR SHALL ALSO FURNISH SUBMITTAL FOR SUBMISSION & REVIEW BY A.O.R.



1 FLOOR PLAN
SCALE: 1/4" = 1'-0"

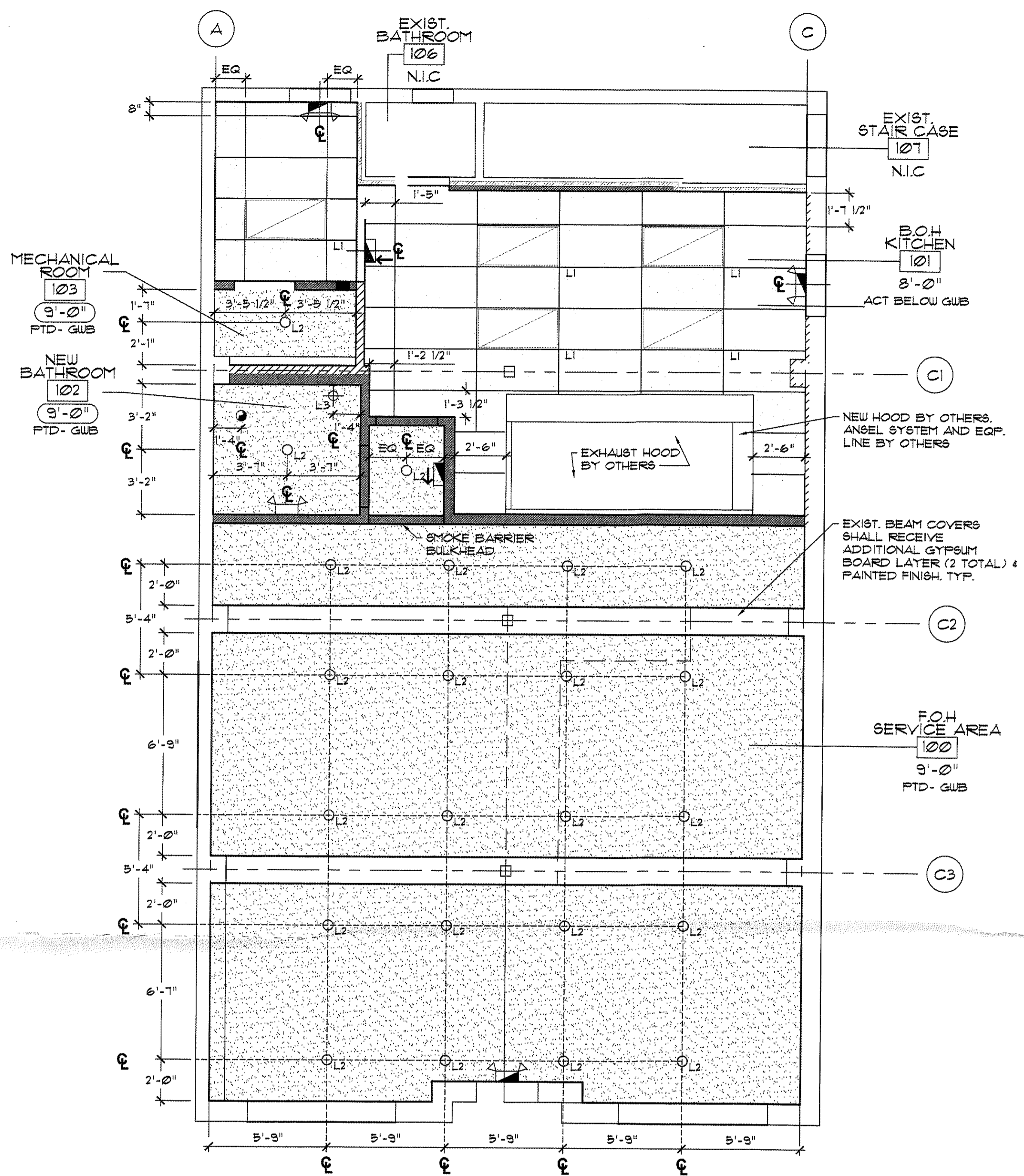


A NONCOMBUSTIBLE NON-LOADBEARING PARTITION WALL TO TERMINATE AT UNDERSIDE OF GYPSUM BOARD CEILING



B NONCOMBUSTIBLE NON-LOADBEARING 2 HOUR RATED PARTITION WALL, UL U425 TO TERMINATE AT UNDERSIDE OF GYPSUM BOARD CEILING

3 WALL TYPE DETAILS
SCALE: 1-1/2" = 1'-0"



2 REFLECTED CEILING PLAN
SCALE: 1/4" = 1'-0"

ROOM FINISH SCHEDULE

ROOM #	ROOM NAME	FLOOR	BASE	WALLS	CEILING	CLG. HT.	REMARKS
100	F.O.H. SERVICE AREA	CONC	PWD	FGWB	FGWB	9'-0"	123
101	BOH KITCHEN	R.Q.T	PWD	FGWB	FGWB	8'-0"	123,46
102	BATHROOM	CONC	PWD	FGWB	FGWB	9'-0"	123,5
103	MECHANICAL ROOM	R.Q.T	PWD	FGWB	FGWB	9'-0"	123

- NOTES
- PAINT COLOR TO BE DETERMINED BY OWNER.
 - STAINED COLOR TO BE DETERMINED BY OWNER.
 - ALL MATERIALS SHALL BE PROVIDED & INSTALLED BY CONTRACTOR UNLESS NOTED OTHERWISE.
 - KITCHEN & PREP AREAS TO RECEIVE S.S. & FRP FINISH AS NOTED IN PLAN
 - ADD ALTERNATE L.V.T. TILE FINISH IN REST ROOM
 - KITCHEN & PREP AREAS SHALL RECEIVE A.C.T. CEILING GRID BELOW FIRE RATED GUB CEILING

LEGEND

ACT	ACOUSTICAL CEILING TILE
FRP	FIBERGLASS REINFORCED PANEL
L.V.T.	LUXURY VINYL TILE
FGWB	PAINTED GYPSUM WALL BOARD
PWD	PAINTED WOOD BASE
PWD	PAINTED WOOD
R.Q.T	RED QUARRY TILE
S.S.	STAINLESS STEEL