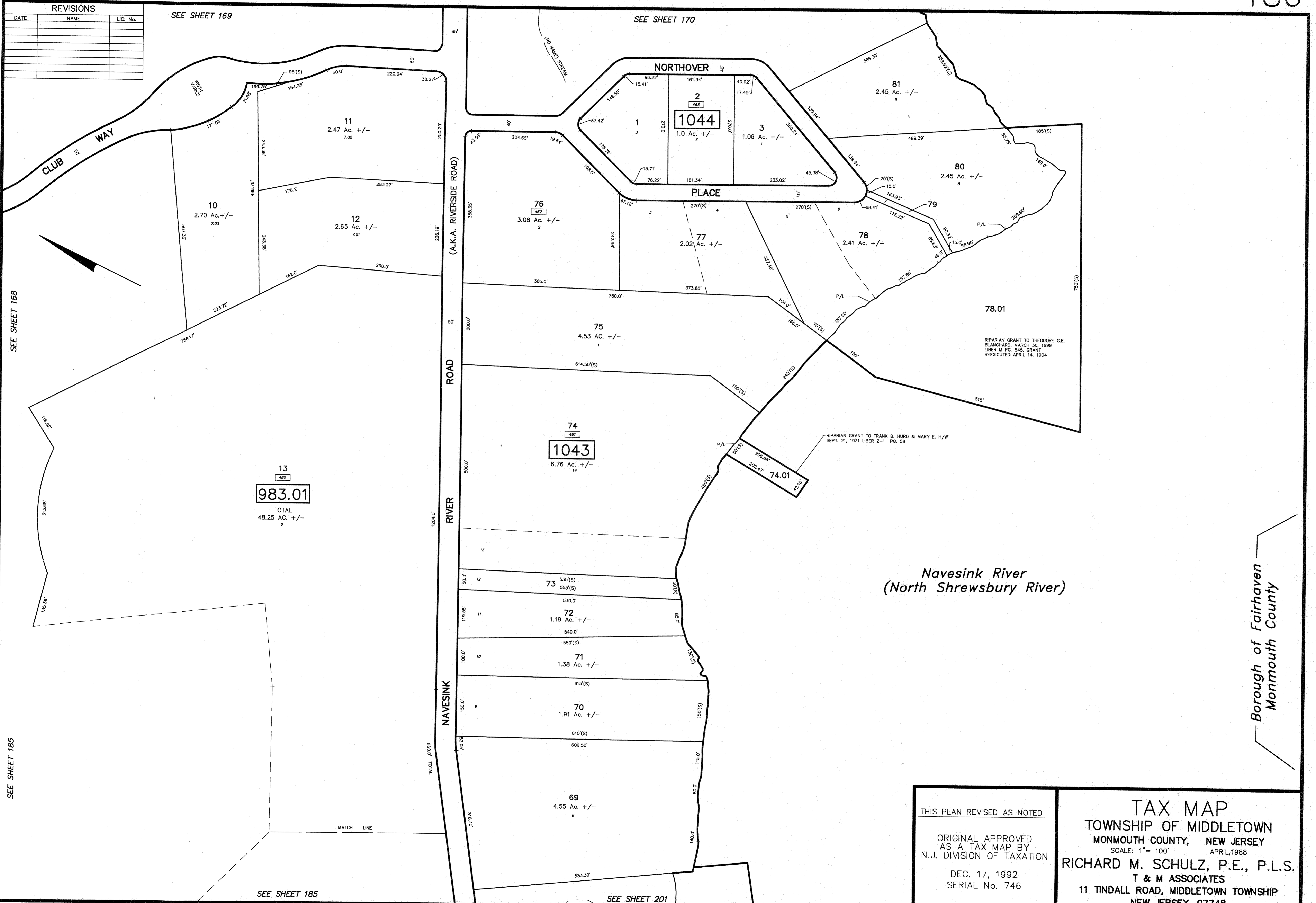


REVISIONS		
DATE	NAME	LIC. No.

SEE SHEET 169

SEE SHEET 170



SEE SHEET 168

SEE SHEET 185

SEE SHEET 185

SEE SHEET 201

Navesink River (North Shrewsbury River)

Borough of Fairhaven  
Monmouth County

THIS PLAN REVISED AS NOTED

ORIGINAL APPROVED AS A TAX MAP BY N.J. DIVISION OF TAXATION

DEC. 17, 1992 SERIAL No. 746

**TAX MAP**  
**TOWNSHIP OF MIDDLETOWN**  
**MONMOUTH COUNTY, NEW JERSEY**  
 SCALE: 1" = 100' APRIL, 1988  
**RICHARD M. SCHULZ, P.E., P.L.S.**  
 T & M ASSOCIATES  
 11 TINDALL ROAD, MIDDLETOWN TOWNSHIP  
 NEW JERSEY, 07748