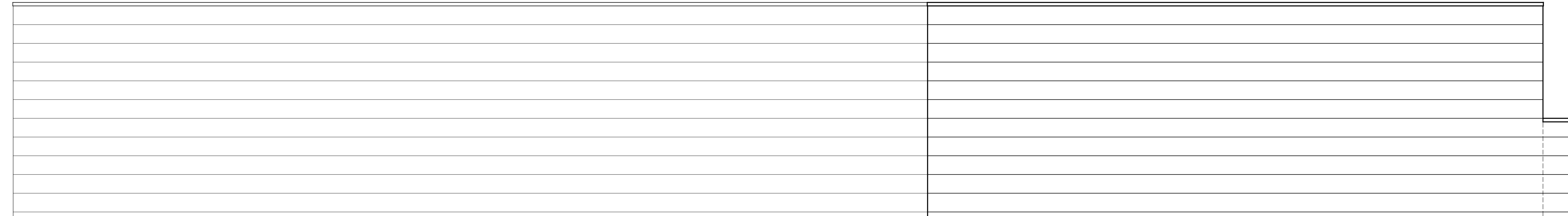
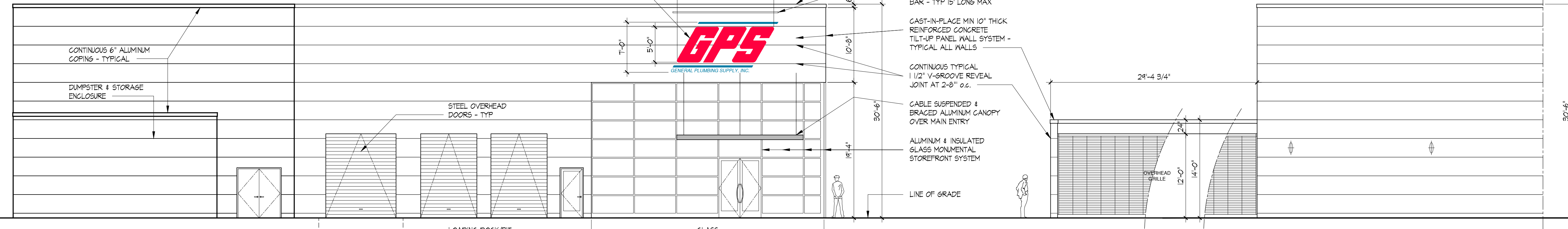




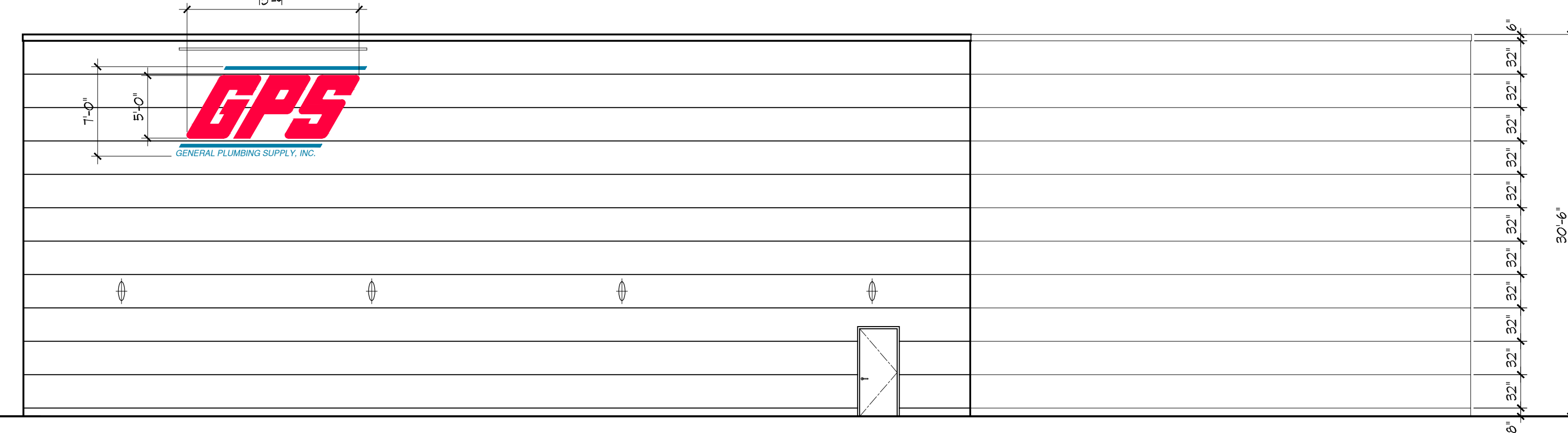
1 PROPOSED EXTERIOR
CONCEPT ELEVATION NORTH - RT 36 VIEW
 SCALE: 1/8"=1'-0"



2 PROPOSED EXTERIOR
CONCEPT ELEVATION SOUTH - REAR VIEW
 SCALE: 1/8"=1'-0"

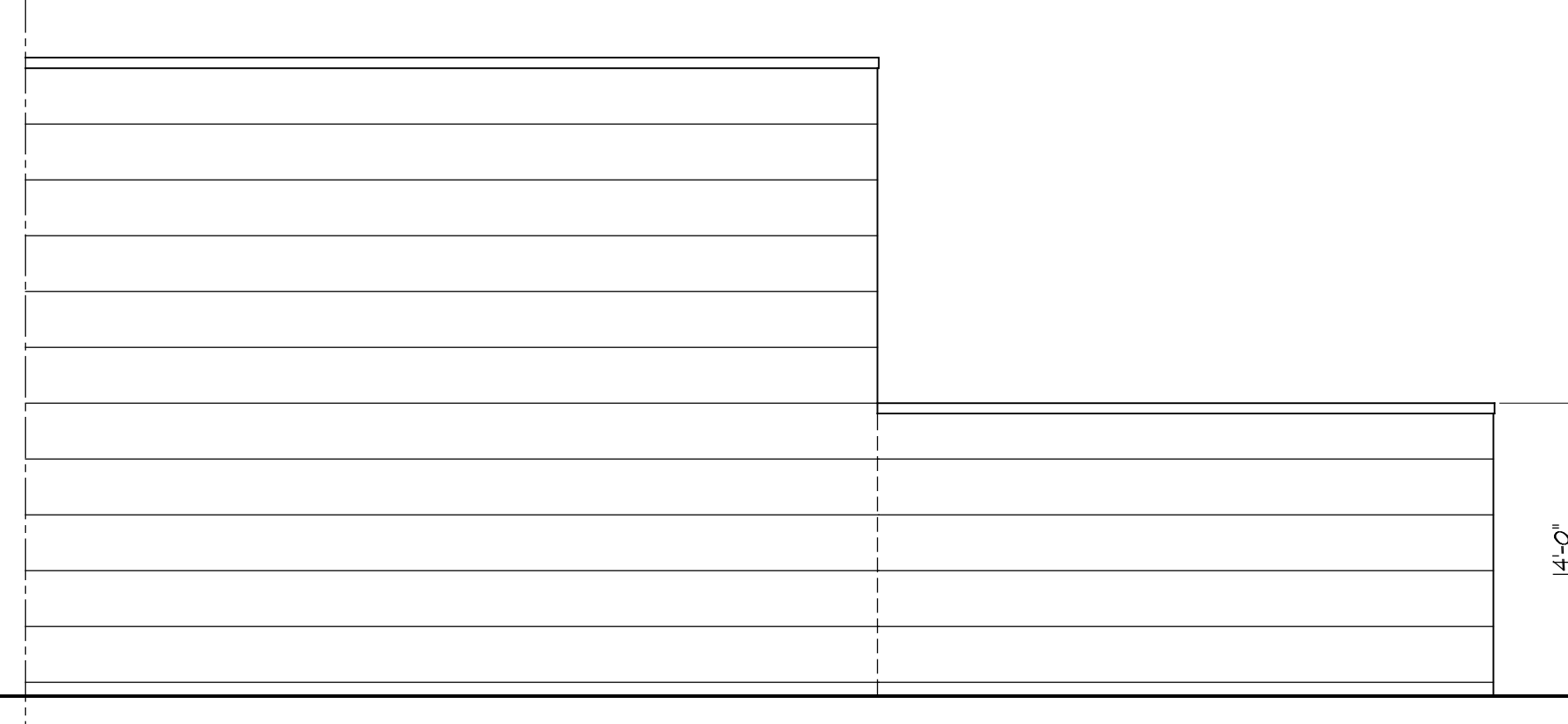


3 PROPOSED EXTERIOR
CONCEPT ELEVATION WEST - ENTRY & LOADING VIEW
 SCALE: 1/8"=1'-0"



4 PROPOSED EXTERIOR
CONCEPT ELEVATION EAST - RESIDENTIAL VIEW
 SCALE: 1/8"=1'-0"

5 PROPOSED EXTERIOR - VIEW OF DUMPSTER & STORAGE ENCLOSURE
PARTIAL ELEVATION NORTH - RT 36 VIEW
 SCALE: 1/8"=1'-0"



6 PROPOSED EXTERIOR - VIEW OF DUMPSTER & STORAGE ENCLOSURE
PARTIAL ELEVATION SOUTH - REAR VIEW
 SCALE: 1/8"=1'-0"

THIS DRAWING IS THE PROPERTY OF SWS ARCHITECTS, LLC AND SHALL NOT BE USED WITHOUT THE EXPLICIT WRITTEN PERMISSION OF SWS - POSSESSION OF THIS DRAWING(S) ALONE SHALL NOT CONSTITUTE PERMISSION OR APPROVAL FOR ANY FORM OF USE

8		
7		
6		
5		
4		
3		
2		
1		
0	3-12-21	ISSUED FOR PLANNING BOARD REVIEW
NO.	DATE	REMARKS
REVISIONS		

ALL CONDITIONS AND DIMENSIONS SHALL BE VERIFIED IN THE FIELD AND THE CONTRACTOR SHALL BRING TO THE ATTENTION OF THE ARCHITECT ANY CONDITIONS WHICH WILL ALTER OR IMPEDE THE DESIGN AS SHOWN ON DRAWINGS

PROP WAREHOUSE, OFFICE BLDG
 GENERAL PLUMBING SUPPLY

GPS | KITCHEN
 BATH
 LIGHTING

170 RT 36 - (BLOCK 204, 205 - LOT 1)
 MIDDLETOWN, NEW JERSEY

CONCEPTUAL ELEVATIONS

SWS
 ARCHITECTS

316 Eisenhower Parkway
 Livingston, N.J. 07039
 973.994.9797 Fax 973.535.6565

STEPHEN W. SCHWARTZ, AIA ARCHITECT
 NJ 10664 NY 11347 PA 89267 DE 5489 CT 5744

HOWARD COOPERSMITH, AIA ARCHITECT
 NJ 12562

JOB NO. 15-23
 SCALE AS NOTED
 DRAWN BY HC
 CHECKED BY HC/SWS
 DATE 2 JAN 2020

PB-2
 DRAWING NUMBER
 OF
2